

More than you imagine for less than you think!



THE VERMONT

\$163,000

TOTAL AREA **234m²**

Suits 15m wide homesites

A feature packed family home plus three massive bonuses. With more value than ever before, you really do get more with Commodore!

BONUS



Reverse-cycle air conditioning

BONUS

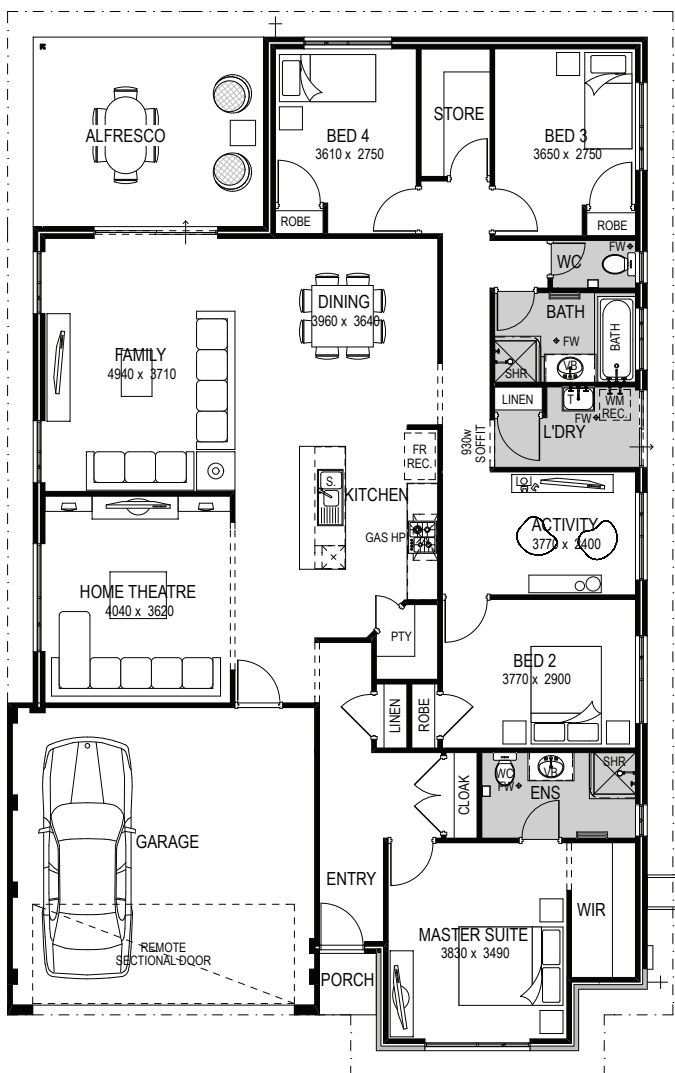


essastone™ benchtops to kitchen, bathroom and ensuite

BONUS



Premium appliance upgrade – 900mm oven, 900mm hotplate, rangehood and dishwasher



Special Plus Series Quality Inclusions

Environmental Specifications

- Five star gas storage hot water unit
- Solar efficient eaves to total living area
- R3.0 insulation to all living areas and garage
- Four star rated Smart Flush slimline toilet system
- Weather seal to all external doors

Security

- Affinity Ultralock coloured aluminium windows and sliding doors
- Flyscreens to all sliding doors and windows
- Gainsborough double cylinder deadlock fitted to shopper door
- Gainsborough Ambassador lever entry set with double cylinder deadlock

Kitchen

- essastone™ benchtops to kitchen
- ABS edging to cupboard doors
- Handles (to builders standard range) to all cupboards and drawers
- 1 ¾ stainless steel sink (with basket wastes) with mixer tap
- Premium 900mm stainless steel Technika underbench oven
- 900mm stainless steel hotplate
- Stainless steel 900mm Technika rangehood flumed to external air
- Underbench stainless steel dishwasher

Ensuite, Bathroom and Laundry

- essastone™ benchtops to ensuite and bathroom
- ABS edging to cupboard doors
- Handles (to builders standard range) to all cupboards and drawers
- Designer china basins
- 1.8 metre high tiling to shower in bathroom and ensuite
- Clear glazed shower screen panel and curtain rod to bathroom and ensuite showers
- Ceramic soap holders in showers
- Designer tapware throughout
- Mirrors up to 900mm wide
- Caroma double towel rails with matching toilet roll holders
- Quality chrome floor waste
- Caroma Smart Flush suite
- Quality tiling to bathroom, ensuite, laundry and WC floor and skirting
- Stainless steel trough and metal cabinet to laundry

* Applies to new subdivisions only. Built up areas may incur additional costs.

Internal

- Gainsborough Instyle lever set internal door furniture

External

- Modern front elevation
- Roof selection from the Harmony Habitat range of roof tiles
- 25 course double garage with grano hardstand and fibro cement sheeting to ceiling with remote garage door
- 25 course ceiling to alfresco
- Blokpave paving to driveway up to six metres, path, verandah and alfresco (from builders standard range)
- Quality Durasheet lined ceiling to alfresco
- Front and rear external garden taps
- Concave joints and cream mortar
- Full paint finish to eaves, fascia, down pipes and meter box
- Three external lights
- Quality 25-degree pitch roof
- 2c external brickwork

Electrical

- Double power points throughout (single to appliances)
- Telecommunications package
- Two hardwired smoke detectors
- RCD safety switch
- Draft stopper exhaust fans to wet areas (where applicable)

Special Inclusions

- Lifetime warranty
- Six month maintenance period
- Building contract indemnity insurance
- Fixed price building contract
- Solid double brick construction
- Professional guidance from our HIA qualified pre-start staff
- Building license and Water Corporation fees
- Costs of plans and specification
- Contour survey and site inspection*
- Site repeg if required*
- Complete termite treatment
- Engineer-designed concrete slab
- Sewer connection seventeen metres past last junction point

DISPLAY HOMES OPEN:

Monday & Wednesday 2pm–5pm,
Saturday 1pm–5pm, Sunday 12pm–5pm

The Corsica
The Laguna
The Le Mans

Gangway Turn, Alkimos
Altea Way, Alkimos
Adlington Way, Ellenbrook

The Bonneville
The Bathurst
The Monza
Pallarup Crescent, Ellenbrook
Colesbrook Drive, Byford
Highland Rise, Piara Waters

The Flemington
The Newmarket
The Indianapolis
Glendale Street, Meadow Springs
Ditton Corner, Wellard
Strathmore Close, Baldivis

Visit commodorehomes.com.au

Ask here for details

Get more with Commodore

